

SETTING UP THE 4005F3

Make sure to place your fountain on a firm area which will not settle. Note: Always follow local electrical codes and use a 110V GFCI protected outlet.

1) Prepare a suitable location for your new fountain. Place the 4005C Bottom piece on your prepared site with the understanding that the power cords will pull out underneath through an exit notch, just to the right of where the pump is shown in the drawing.

2) Set the pump in the back corner as shown and slip its power cord down through the large hole in the floor next to it. Also slip the 5 meter long light extension cord through the same hole. Pull both cords out through the notch underneath, toward your power supply. Open the stopper which has a small and a medium size hole, place the cords in the appropriate holes, close the stopper over the cords and press it down into the hole firmly to make a water tight basin. About 1/8" of the stopper should be left above the hole for ease in future removal. Check the basin to make sure it is level before adding layers.

3) Connect the 3-way light cord adapter (single side) to the top of the 5 meter long extension cord. Make sure the water-tight nut is tightly threaded (do not over tighten) to keep water out. Select one of the lights in your kit and pull out just enough power cord from the light to place it in front of the basin as shown. Connect the other end of the light cord to the 3-way adapter and tighten the nut.

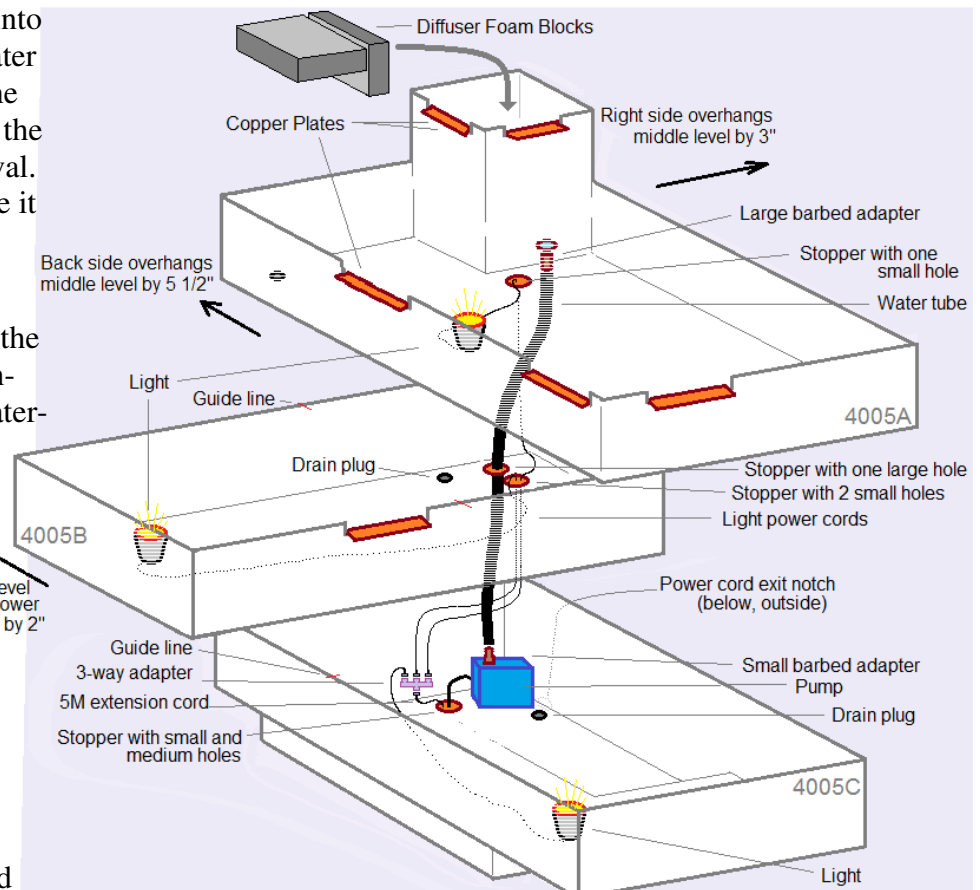
4) Thread the smaller barbed adapter into the top of the pump. Press one end of the water tube onto the adapter.

5) Set the 4005B Middle piece on top of the 4005C basin. You may notice that the 4005C basin has a guide line engraved on top of the left wall showing where the front of the 4005B should rest. For best balance of the whole fountain, the spill slot in front of the 4005B should be lined up about 3/4" inside the wall of the 4005C.

6) Pull the water tube up through one of the holes in the 4005B floor and rest it within the 4005B until performing step #9.

7) Select another light and position it inside the left wall of the 4005B. Run its power cord down through the other hole, connecting the other end to the 3-way adapter below.

8) Insert the larger of the barbed adapters into the threaded coupling underneath the highest section of the 4005A top section. Set the 4005A Top piece on the 4005B. This time, you will find guide lines across the



tops of both the back and front wall of the 4005B which will help you line up the 4005A. It should be just a little more than halfway over the 4005C basin.

9) Reaching underneath, push the open end of the water tube onto the adapter barb which you installed under the highest section of the 4005A. Now, back in the middle level, open the slit in the stopper with the largest hole and place it around the water tube at floor level. Close the stopper over the tube and press it firmly into place in the floor of the middle level.

10) Position your remaining light on the left side of the 4005A as shown. Drop its power cord through the hole in the 4005A floor. Reach below and push this light cord down through the hole in the 4005B floor. Pull the cord through until you connect it to the 3-way adapter on the first level. Make sure all nuts are snug on the 3-way adapter.

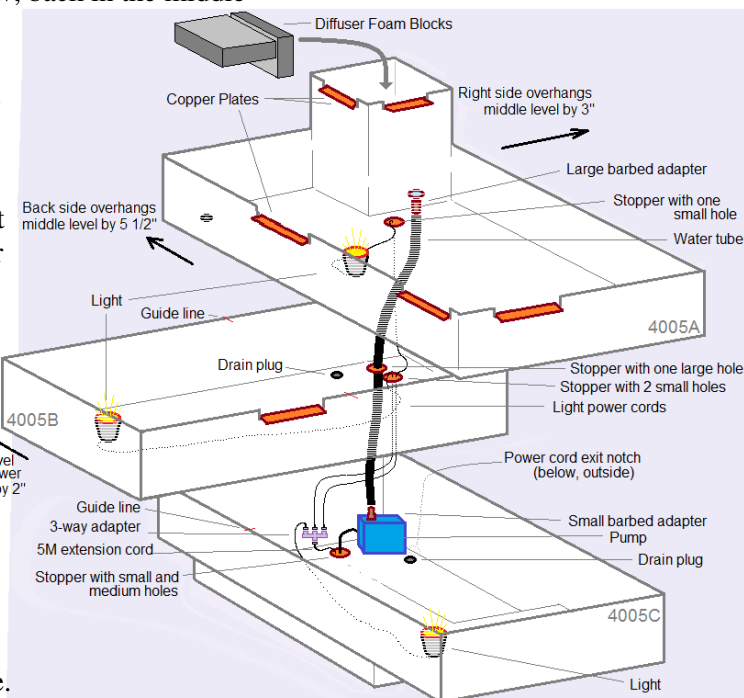
11) Close the hole in the 4005B (second level) by finding the stopper with two small holes. Open the slits and place the two light power cords in the holes. Close the stopper and press firmly into place.

12) Close the hole in the 4005A (top level) using the stopper with just one small hole. Open the slit, place it around the cord, and press into the hole.

13) Place the two diffuser foam sponges into the top tower unit as shown. You will want to turn one sideways against the other to keep them in place. These will help your fountain water flow be smooth.

14) Attach all six copper spill plates. First, lay them out where they belong to make sure you know which sizes belong where. Then, to install each plate, squeeze out a continuous line of silicone sealant on the bottom and part way up the walls of each concrete spill slot. It is important that this be a continuous line to prevent any water from seeping through underneath the plate. Then, press the copper plate in place in the sealant with the plate overhanging the concrete wall about 1/4" to help the smooth waterfall pour away from the concrete.

15) Tip your lights toward the inside of the fountain. Fill all levels of your fountain with water. Read your pump and light instructions. Then plug in the pump and connect to the light transformer to enjoy your fountain. If the pump does not immediately begin working, there may be an "airlock" within the impeller chamber. Simply unplug and plug in a few times and it should start. Use the supplied shims if you need to level or steady any of the concrete pieces. 2/2020



Online Resources

Products: www.henristudio.com/products
FAQs: www.henristudio.com/faq
Warranty: www.henristudio.com/warranty
Contact : www.henristudio.com/contact-us

Caution: The use of Chlorine or Chlorine Bleach or water coloring additives may damage the finish of your fountain.

IMPORTANT – WINTER CARE

Winter ice build-up can cause damage to concrete statuary. Follow these tips to reduce winter weathering to your fountain:

- * Disconnect power to pumps and lights.
- * Remove plugs/stoppers in all fountain bowls to open drains and let all moisture out. Keep drains open throughout winter.
- * Cover with a Henri fountain cover. Keep tight and do not let snow or water collect in sagging areas.
- * Do not allow snow or ice to build up on or against the concrete. Remove snow before it turns to ice. Do not use antifreeze, salt or chemical ice removers as these may damage concrete.