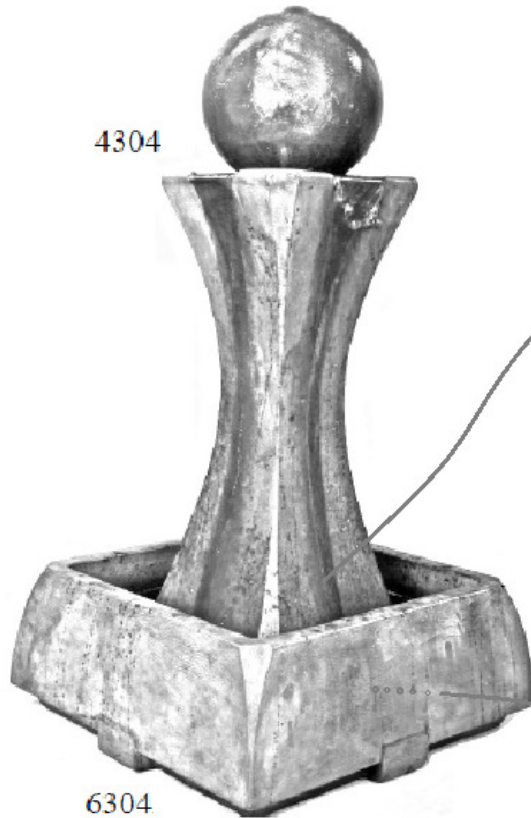
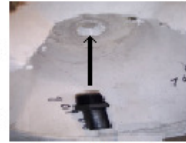


# SETTING UP THE 4304F2

Make sure to place your fountain on a firm area which will not settle. Note: Always follow local electrical codes and use a 110V GFCI protected outlet. Do not let children climb on fountain.



1) Thread large adapter into the coupling under the 4304 Top.

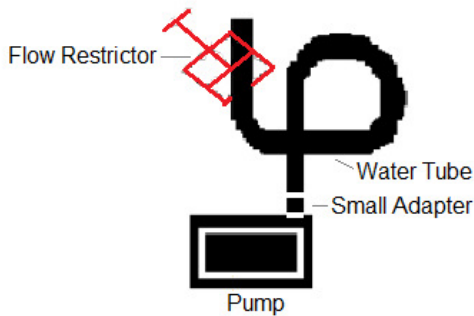


Large Adapter

2) Set the pump in the 6304 Basin and slip power cord down through hole and out the bottom toward your power supply. Then open stopper, place around the power cord, close, and press tightly into the hole.



Rubber Stopper



3) Construct pump assembly as shown at left. Thread small adapter into pump top. Push water tube onto adapter. Slip flow adjuster onto top portion of tube, twisting handle just enough to hold it in place. (This can be tightened later if you want to reduce the water flow.)

4) As you lower Fountain Top into Basin, push the top of tube onto the adapter under the basin. Set the Basin down softly.

5) Then, read your pump instructions, fill the bowls with water, and plug the pump in to enjoy your fountain. If the pump does not immediately begin working, there may be an “airlock” within the impeller chamber. Simply unplug and plug in a few times and it should start. Csd 10/2019

### Online Resources

Products: [www.henristudio.com/products](http://www.henristudio.com/products)  
 FAQs: [www.henristudio.com/faq](http://www.henristudio.com/faq)  
 Warranty: [www.henristudio.com/warranty](http://www.henristudio.com/warranty)  
 Contact : [www.henristudio.com/contact-us](http://www.henristudio.com/contact-us)

### IMPORTANT – WINTER CARE

Winter ice build-up can cause damage to concrete statuary. Follow these tips to reduce winter weathering to your fountain:

- \* Disconnect power to pumps and lights.
- \* Remove plugs/stoppers in all fountain bowls to open drains and let all moisture out. Keep drains open throughout winter.
- \* Cover with a Henri fountain cover. Keep tight and do not let snow or water collect in sagging areas.
- \* Do not allow snow or ice to build up on or against the concrete. Remove snow before it turns to ice. Do not use antifreeze, salt or chemical ice removers as these may damage concrete.

Caution: The use of Chlorine or Chlorine Bleach or water coloring additives may damage the finish of your fountain.