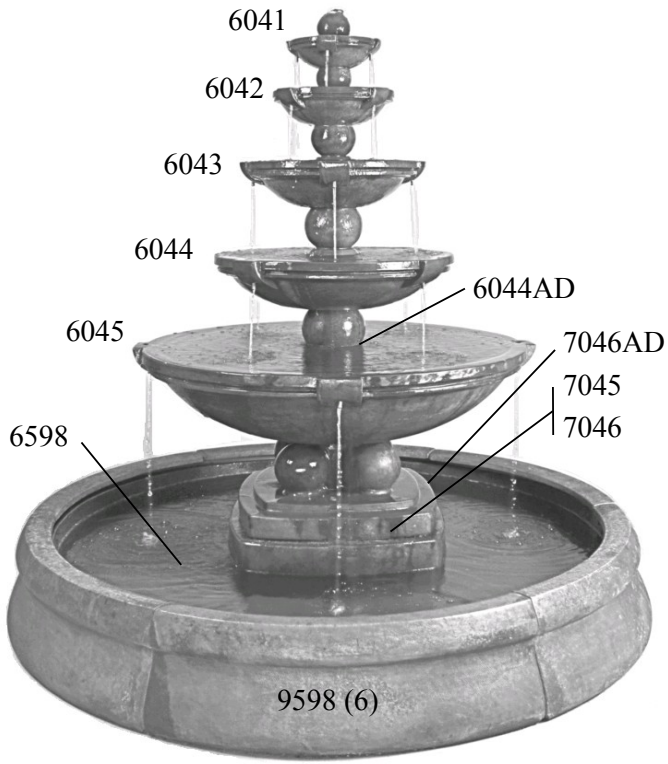
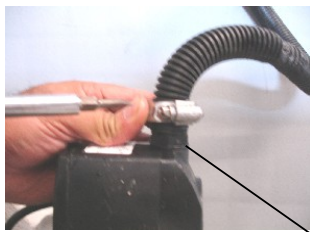


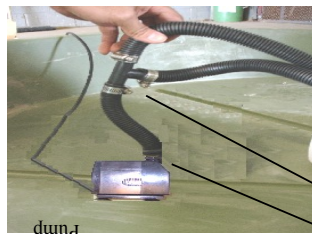
5041F16 Spheres Fountain 16pc.



Cork
Rubber Stopper RS1.5



5



6



7



8



6



10



11



Clamp M SS
Adapter 1" X 3/4"
Pump

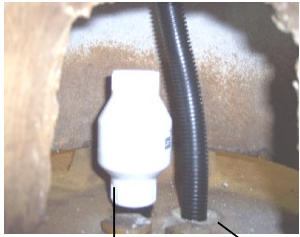
Clamp M SS (3)
Adapter 3/4" X 3/4"
Tee

NK Tubing 72"

NK Tubing 30"

Adapter 1" X 3/4"

Check Valve
Nipple 1"



12



13



Rubber Stopper UK3/4"
Check Valve
Nipple 1"



14



15



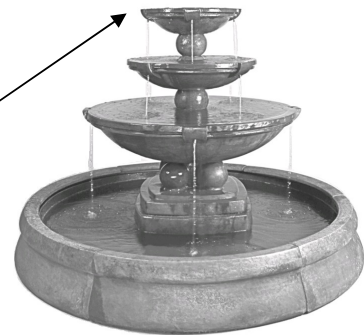
Rubber Stopper UK3/4"
Check Valve
Nipple 1"



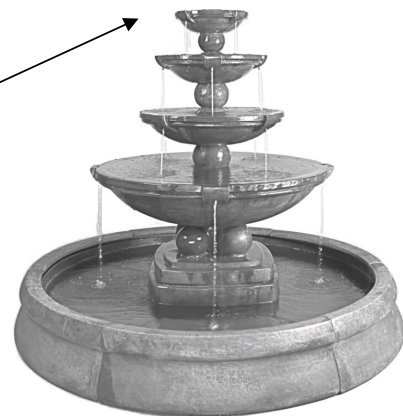
16



17



18



5041F16 Spheres Fountain 16pc.



19



20



21



Parts List For CK5041F16

QTY	Description	Henri Part #
1	Fact Book	60-01H
1	Rubber Stopper RS1.5	19-37H
5	CORK #00SL	19-09H
1	PS850 PUMP	24-68H
1	ADAPTER 3/4"MNPT X 3/4"BARB	15-157H
1	TEE3/4"	15-46H
5	CLAMP MEDIUM SS	15-121H
1	NKT3/4" X 4"	04-35H
1	NKT3/4" X 30"	04-35H
1	NKT3/4" X 72"	04-35H
3	Rubber Stopper UK3/4"	19-49H
1	ADAPTER 1"MNPT X 3/4"BARB	15-248H
1	NIPPLE 1" CLOSE	15-177H
1	CHECK VALVE 1"	15-08H
10	SHIM, PLASTIC BREAKOFF	01-58H
1	HT WARRANTY CARD	60-03H
1	HT COMPANION SELL SHEET	60-04H
1	HT BAG 2MIL ZIPx6.25"x9.25" PRIN P	12-31H

Please note: Always follow local electrical codes and use 110V GFCI protected outlet.

Nota: Siempre siga los códigos eléctricos locales y utilizar un GFCI 110V protegida toma de corriente.

Remarque: Suivez toujours les codes électriques locaux et une utilisation 110V GFCI protégées prise de courant

• Fact Book - Livret d'informations - Manual de Información

IMPORTANT, this booklet contains maintenance, troubleshooting and winter care instructions.

IMPORTANTE, este folleto contiene instrucciones para el mantenimiento, resolución de problemas e instrucciones para el cuidado invernal.

IMPORTANT, cette brochure contient de maintenance, de dépannage et d'entretien d'hiver.