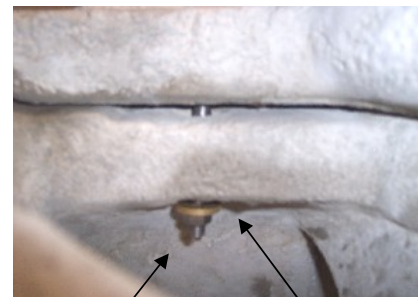
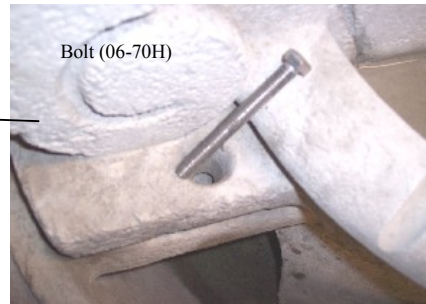
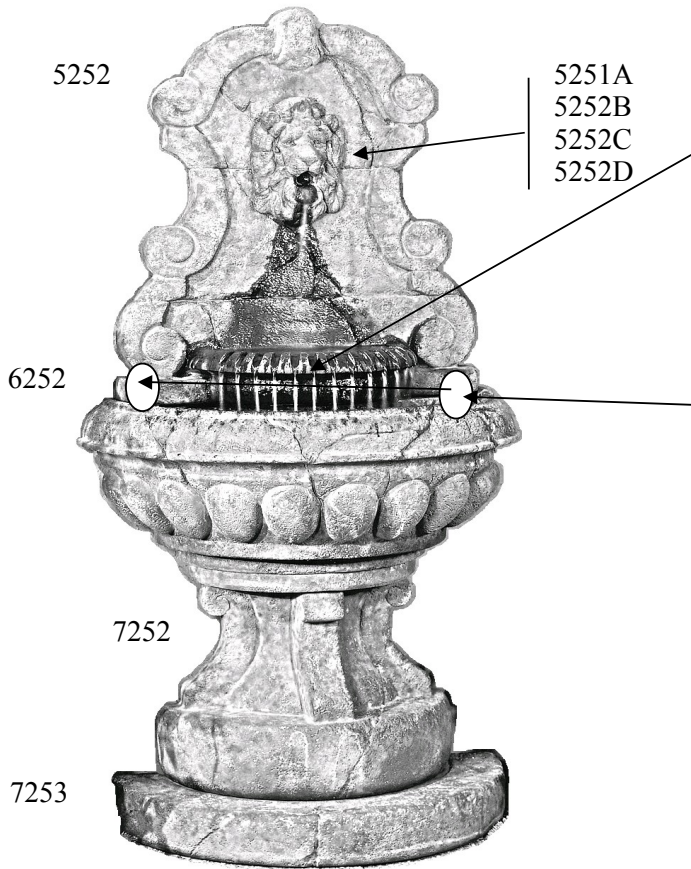
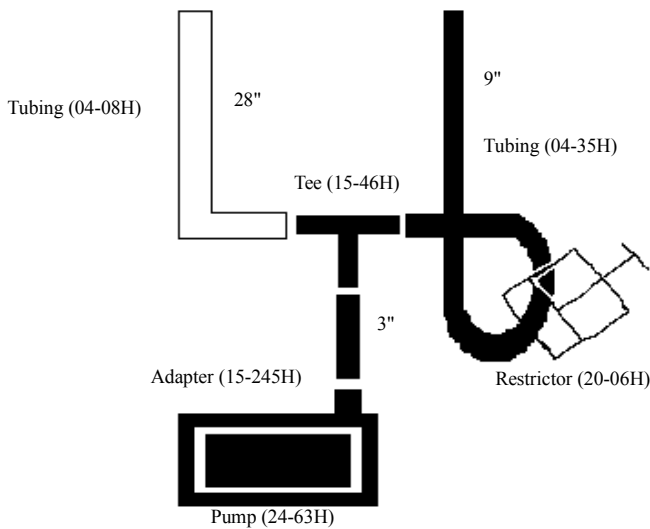


5252FA, B, C, D

Europa Murabella Lion
Fountain, 5 pc.

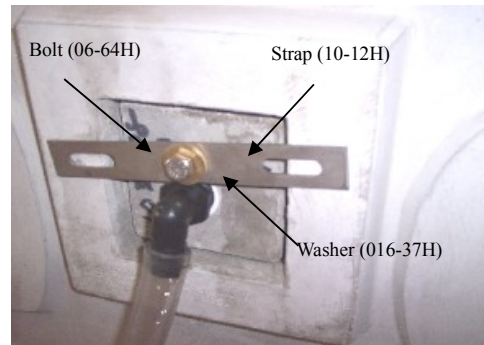
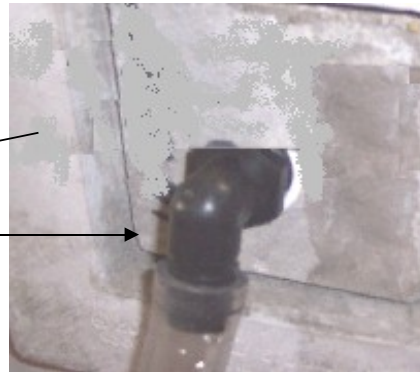


Nut (06-57H) Washer (16-37H)
2 each





Elbow (15-184H)



Part list: CK628

QTY	Description	Henri Part #
1	Fact Book	60-01H
1	PUMP, PS3 PUMP BULK	24-63H
1	ADAPTER 1/2" MT X 3/4" BARB P	15-245H
1	NKT3/4" X 3"	04-35H
1	NKT3/4" X 9"	04-35H
1	CLEAR TUBING 3/4" X 28"	04-08H
1	TEE 3/4" BARBED	15-46H
1	ELBOW 3/4"MNPT X 3/4"BARB	15-184H
2	BOLT, TAP 3/8 - 16 X 3.5" SS	06-70H
5	WASHER, 1 X 7/16 -18GA. BRASS	16-37H
2	NUT, 3/8-16 FINISHED HEX 18-8	06-57H
2	CAPS FOR 6652	6652CPH
1	BOLT, TAP 3/8 - 16 X 1" SS	06-64H
1	STRAP, SS 7" X 1" X .1" W/2 3	10-12H
1	ADAPTER 3/4" MPT X 3/4" BARB	15-157H
1	RESTRICTOR R1 RESTRICTOR SMALL	20-06H
1	HT WARRANTY CARD	60-03H
1	HT COMPANION SELL SHEET	60-04H
1	HT BAG 2MIL ZIPx6.25"x9.25" PRIN P	12-31H

Please note: Always follow local electrical codes and use 110V GFCI protected outlet.

Nota: Siempre siga los códigos eléctricos locales y utilizar un GFCI 110V protegida toma de corriente.

Remarque: Suivez toujours les codes électriques locaux et une utilisation 110V GFCI protégées prise de courant

• Fact Book - Livret d'informations - Manual de Información

IMPORTANT, this booklet contains maintenance, troubleshooting and winter care instructions.

IMPORTANTE, este folleto contiene instrucciones para el mantenimiento, resolución de problemas e instrucciones para el cuidado invernal.

IMPORTANT, cette brochure contient de maintenance, de dépannage et d'entretien d'hiver.