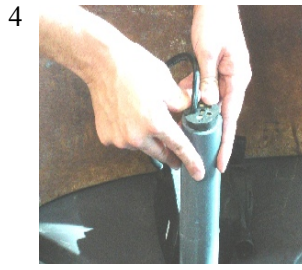
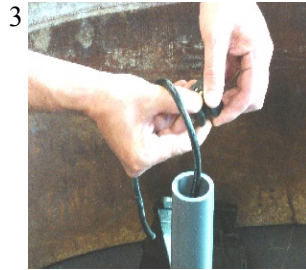
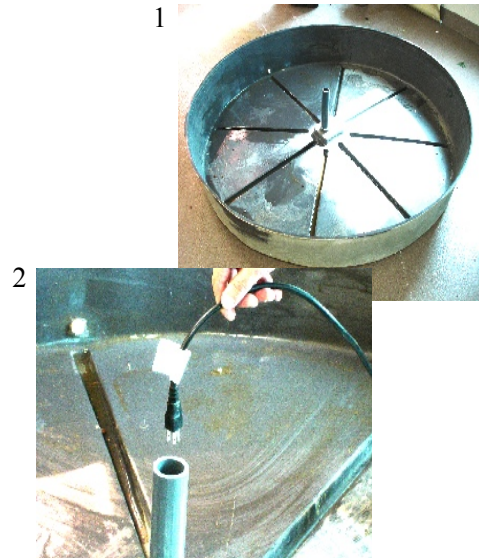
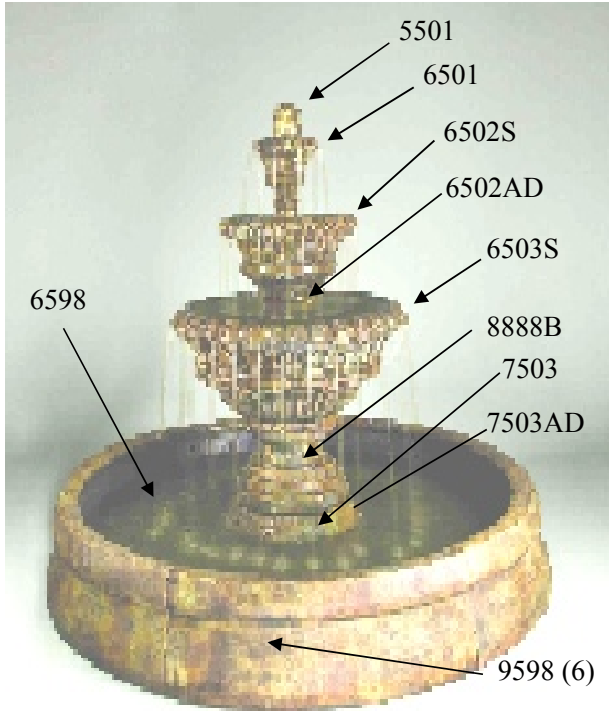
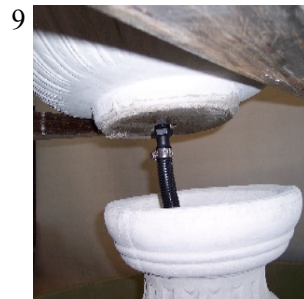
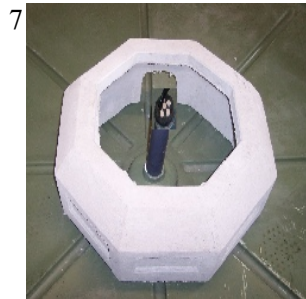


# 5501F13 Valencia Spill Fountain 15pcs.



6



10



THE CREATIVITY CONTINUES...



11



12



13



14



15



16



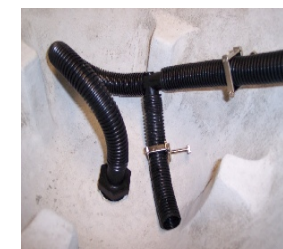
17



18



19



20



21



22



23



24



25



26



THE CREATIVITY CONTINUES...

## 5501F13 Valencia Spill Fountain 15pcs.

27



### Parts List For CK631

QTY	Description	Henri Part #
1	PS850 PUMP	24-68H
1	Fact Book	60-01H
1	RS1.5"	19-37H
5	CORK 0SL	19-09H
3	ADAPTER 1"MNPT X 1"BARB	15-155H
1	ADAPTER 3/4"MNPT X 1"BARB	15-117H
2	CLAMP LARGE SS	15-119H
1	NKT1" X 36" TUBING	04-30H
1	TUBING SPECIAL X 7"	04-54H
2	ADAPTER 1"MNPT X 3/4"BARB	15-248H
1	NKT3/4" X 6" TUBING	04-35H
1	TEE3/4"	15-46H
1	NKT3/4" X 12" TUBING	04-35H
1	NKT3/4" X 18" TUBING	04-35H
2	R1 RESTRICTOR	20-06H
8	SHIM	01-58H
1	RSUK3/4"	19-49H
1	HT WARRANTY CARD	60-03H
1	HT COMPANION SELL SHEET	60-04H
1	HT BAG 2MIL ZIPx6.25"x9.25" PRIN P	12-31H

Please note: Always follow local electrical codes and use 110V GFCI protected outlet.

Nota: Siempre siga los códigos eléctricos locales y utilizar un GFCI 110V protegida toma de corriente.

Remarque: Suivez toujours les codes électriques locaux et une utilisation 110V GFCI protégées prise de courant

• Fact Book - Livret d'informations - Manual de Información

IMPORTANT, this booklet contains maintenance, troubleshooting and winter care instructions.

IMPORTANTE, este folleto contiene instrucciones para el mantenimiento, resolución de problemas e instrucciones para el cuidado invernal.

IMPORTANT, cette brochure contient de maintenance, de dépannage et d'entretien d'hiver.