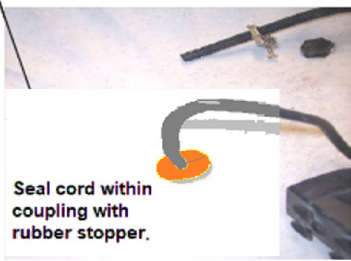
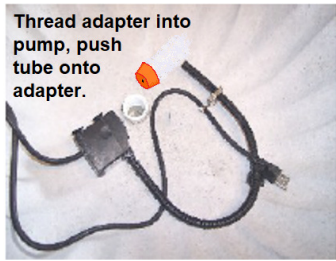
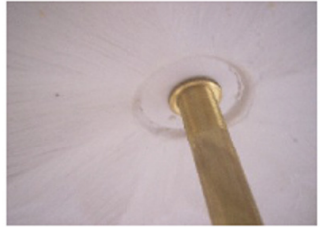
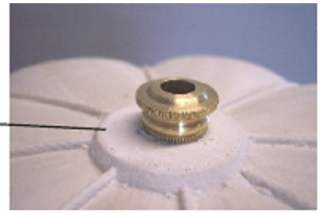
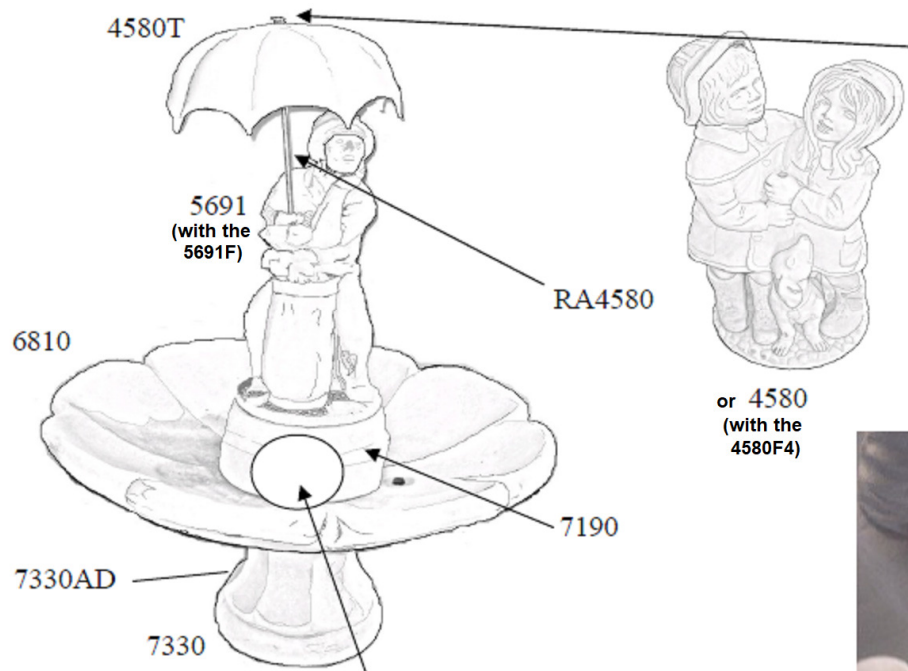


# SETTING UP THE 4580F4 or 5691F

Make sure to place your fountain on a firm area which will not settle. Note: Always follow local electrical codes and use a 110V GFCI protected outlet. Do not let children climb on fountain.



Once all is connected, fill all bowls and pool with water. Read pump instructions. Turn on the pump. If it does not immediately begin working, there may be an “airlock” within the impeller chamber. Simply unplug and plug in a few times and it should start. Csd 6/2021

**Online Resources**  
 Products: [www.henristudio.com/products](http://www.henristudio.com/products)  
 FAQs: [www.henristudio.com/faq](http://www.henristudio.com/faq)  
 Warranty: [www.henristudio.com/warranty](http://www.henristudio.com/warranty)  
 Contact : [www.henristudio.com/contact-us](http://www.henristudio.com/contact-us)

Caution: The use of Chlorine or Chlorine Bleach or water coloring additives may damage the finish of your fountain.

**IMPORTANT – WINTER CARE**  
 Winter ice build-up can cause damage to concrete statuary. Follow these tips to reduce winter weathering to your fountain:

- \* Disconnect power to pump.
- \* Remove plugs/stoppers in all fountain bowls to open drains and let all moisture out. Keep drains open throughout winter.
- \* Cover with a Henri fountain cover. Keep tight and do not let snow or water collect in sagging areas.
- \* Do not allow snow or ice to build up on or against the concrete. Remove snow before it turns to ice. Do not use antifreeze, salt or chemical ice removers as these may damage concrete.